

# Hysteria

♩ = 93

## Intro

4

## A<sup>1</sup>

## B<sup>1</sup>

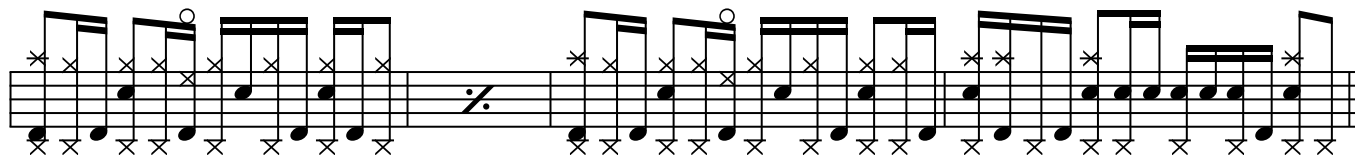
A<sup>2</sup>

Two staves of musical notation for section A<sup>2</sup>. The first staff contains a sequence of notes with stems pointing up, some marked with an 'x' and some with an 'o'. The second staff continues this sequence, ending with a final chord of four notes.

B<sup>2</sup>

Nine staves of musical notation for section B<sup>2</sup>. The notation includes various note values, stems, and rests. Some staves feature repeat signs (double dots with a slash) indicating repeated rhythmic patterns. The notation is consistent with the A<sup>2</sup> section, using 'x' and 'o' markers on notes.

B<sup>3</sup>



CODA

